

T119 “A” Trail

Sacramento Ranger District



T119

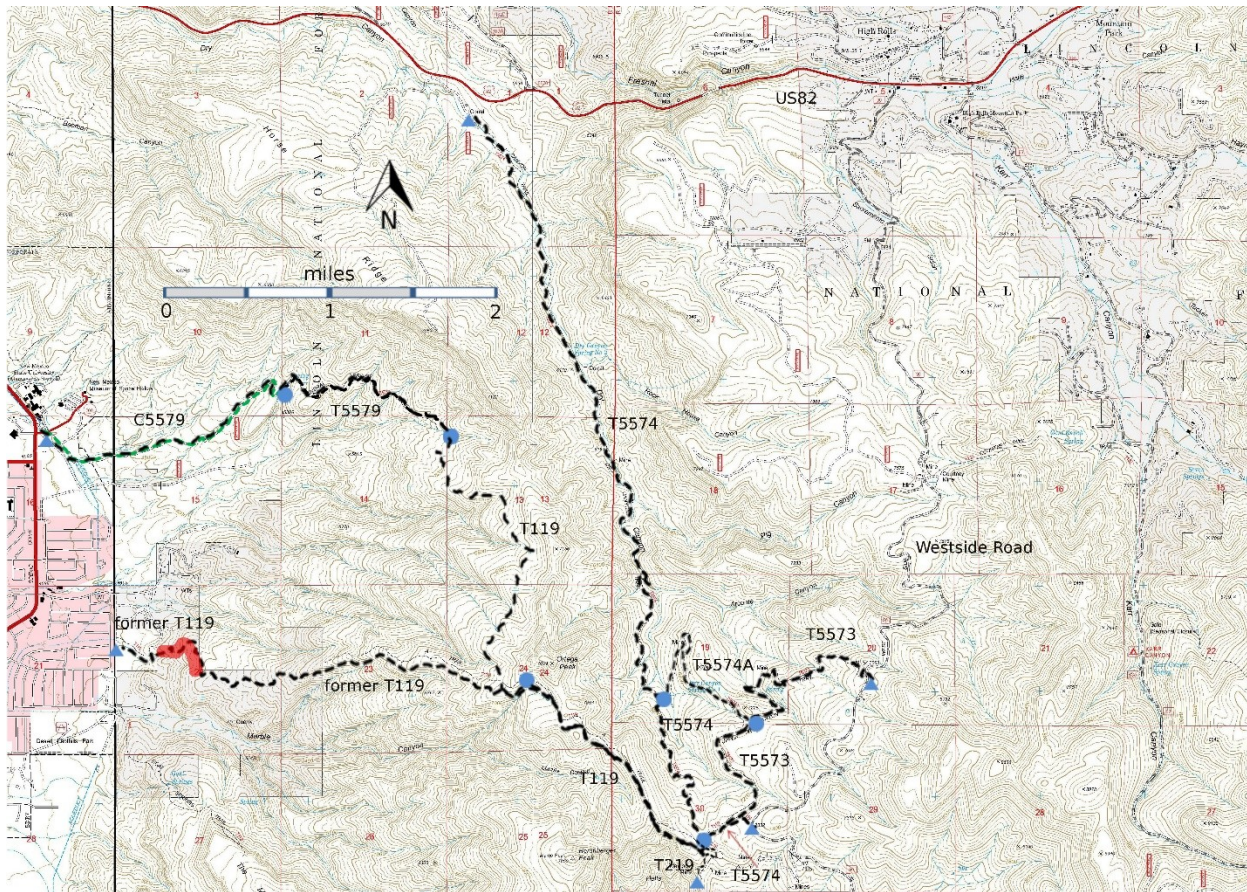
GPS Track (as .GPX)

Left click to open in your browser; then save from browser.

LENGTH	ELEVATION	DIFFICULTY	SCENERY
7.3 miles (see text)	4600 - 7400 ft 2800 ft difference	Difficult	4

Allowed Usage				

See Usage Section on next page.



[Link to map color/symbol codes](#)

T119, T219, T5573, T5574, and T5574A are shown as black dashed lines on the map. C119 and C5579 are shown as green dashed lines on the map. The red mark indicates a section of former T119 that is closed private property.

DESCRIPTION: The rerouted T119 – still named “A” trail although it no longer passes the “A” – consists of an old jeep road (upper part) and an old cattle trail (lower part). At its lower end, T119 joins T5579 Mineral springs Trail at an unmarked junction. The gpx track provided is for the full 7.3 mile hike starting at the T119/T5574 junction, joining T5579, and ending at NMSU-Alamogordo.

T119 begins at mile 0.4 on T5574.

Southwest of the intersection of T119 and T5574 is Hershberger Peak. At 7,850 feet elevation, it is the highest mountain along this path, towering 450 feet over the trail from its nearest approach at mile 0.3. Mile 1.2 marks a saddle, the trail's high point and site of a pleasant primitive campsite along the edge of a large meadow. To the north is Ortega Peak, elevation 7,659. Although no trail accesses its summit, a *spectacular 360-degree panorama* awaits those who find their way to the top. The summit contains about a quarter acre of relatively flat terrain. From its edges are grand vistas of Sierra Blanca Peak, the Tularosa Basin and White Sands areas, San Andres Mountains and Organ Mountains beyond the basin, and two-thirds of Alamogordo, including the Space Museum.

As T119 descends to the west from the saddle, it makes a sweeping turn around a large, scenic, naturally forested bowl.

At mile 1.5 is an unused large metal tank where water from a fenced, asphalt apron was collected from rains to fill the tank. Just beyond, a T119 sign directs trail users north to the rerouted T119, also an old jeep road. 1.5 miles from this point, at a marked junction. T119 leaves the jeep road and follows a single path trail that eventually joins the upper end of T5579. Near the lower end of T119 there is a fork with both choices about equally worn. Take the right hand (upper) path.

ACCESS: To reach the upper end of T119, begin in High Rolls at the junction of US82 and Westside Road (same as FR90 and County A061), across from the convenience store. Drive on Westside Road south 6.9 miles to a wide curve going left. The sign for T5574 is here, and the trailhead for T119 is 0.4 miles down T5574.

To reach the lower trailhead, refer to the instructions for T5579.

GPS Coordinates for Key Points

NAD83	Lat/Lon hddd mm ss.s	UTM (13 S)
Upper Trailhead T119	N32 52 58.0 W105 51 27.5	419775 3638617
Junction of T119 and T5579	N32 55 03.8 W105 53 02.7	417335 3642513
Ambiguous fork	N32 54 45.1 W105 52 44.8	417246 3642337
Lower Trailhead T119	N32 53 59.0 W105 55 01.9	414222 3640544

Links to Other Resources

[Area Map](#)

[Alamogordo North - High Rolls Topo Map \(joined\)](#)

Last Hiked: 2021

Updated 1/31/2022